



# TABLE OF CONTENTS

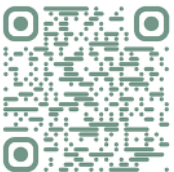
**PAGE 1: FAQs FOR CHURCHES AND HOST PARTNERS**

**PAGE 2: FLYER FRONT INCLUDING A BRIEF OVERVIEW OF THE LOVE THEM BOTH GARDEN AND HOW TO PARTICIPATE - FOR YOUR CONGREGATION**

**PAGE 3: FLYER BACK INCLUDING FAQs FOR YOUR CONGREGATION**

**PAGE 4: DISPLAY SIGN THAT CAN BE POSTED NEAR THE GARDEN TO CLARIFY THE PROCESS TO YOUR CONGREGATION**

**PAGE 5: A BULLETIN INSERT YOU CAN USE TO PROMOTE THE GARDEN**





# Love Them Both Garden Host Partner Info

The Love Them Both Garden is a Mother's Day outreach of Louisiana Right to Life (LARTL) that supports pregnant women and new moms with practical items, encouragement, and a reminder that they are not alone. Partner organizations help provide the space and community support to connect donors with moms in need, display the Love Them Both Garden, and provide an easy return site for gifts.

## Who Can Be a Host Partner?

- Host Partners can be churches, schools, ministries, coffeeshops, restaurants, local businesses, shops, and professional offices.
- All host sites must be approved by LARTL and willing to display the Love Them Both Garden and encourage donor participation within their community.

## What is a Host Partner's Role?

Display the Love Them Both Garden in a visible and accessible location:

- Encourage members, customers, employees, or guests to adopt a mom.
- Promote the garden through announcements, email, signage, and/or social media.
- Collect donated items by the deadline.
- Return all collected gifts to LARTL as instructed.

## How does the garden display work?

- LARTL provides flower tags and display.
- Each flower tag represents one mom and lists her specific wishlist items.
- Donors take a tag, purchase the listed items, and return them with the tag attached.
- The flower tag must remain attached to the outside of the gift for proper tracking.

## What happens after collection?

- Host Partners notify LARTL when collection is complete or by the May 2nd deadline.
- Gifts are transferred to LARTL for sorting and preparation.
- LARTL coordinates distribution to our community partners that help moms partner organizations.
- Moms receive their gifts before Mother's Day through the community partner they receive services from.



Scan or visit [www.ProLifeLouisiana.org/LTBPpartner](http://www.ProLifeLouisiana.org/LTBPpartner) to apply!



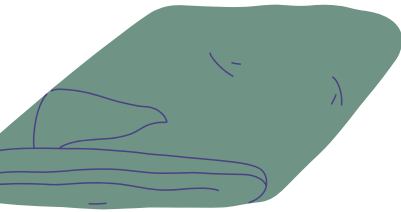


# THIS MOTHER'S DAY ADOPT A MOM IN NEED



**EVERY MOM DESERVES TO EXPERIENCE THE JOY OF BEING CELEBRATED AND SUPPORTED ON MOTHER'S DAY!**

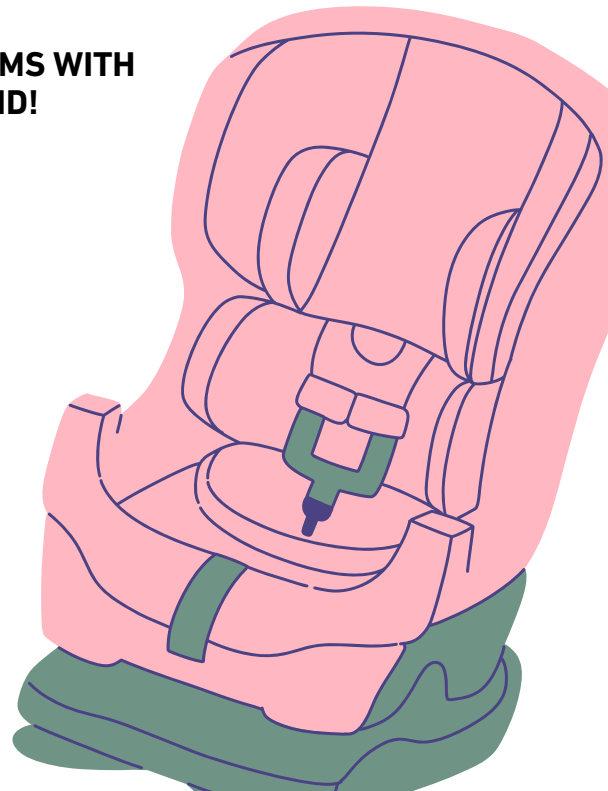
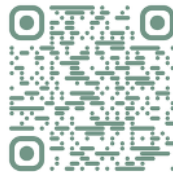
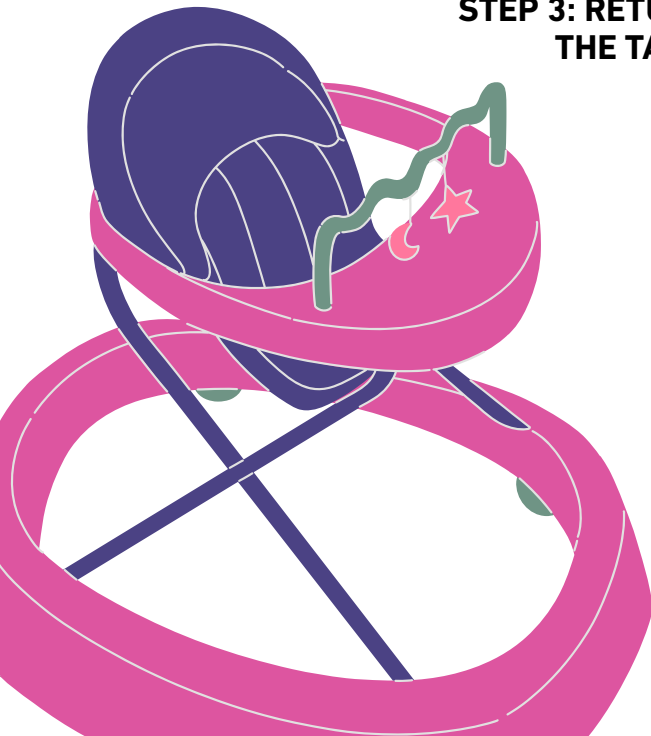
**LOVE THEM BOTH THIS MOTHER'S DAY BY ADOPTING A MOM AT THE GARDEN DISPLAY IN THE LOBBY!**



**STEP 1: CHOOSE A FLOWER, EACH HAS A TAG ATTACHED WITH A MOM'S WISHLIST!**

**STEP 2: SHOP FOR YOUR ADOPTED MOM OR BABY!**

**STEP 3: RETURN YOUR WISHLIST ITEMS WITH THE TAG ATTACHED BY MAY 2ND!**





# FAQS

**WHY DO YOU HAVE TAGS FOR MOMS AND BABIES?  
WE WANT TO LOVE AND SUPPORT BOTH MOMS AND  
BABIES, WHICH MEANS HELPING WITH BOTH THEIR  
NEEDS!**

**DO I NEED TO BUY EVERYTHING LISTED ON THE TAG?  
WHILE BUYING EVERYTHING ON A WISHLIST WOULD BE  
A HUGE BLESSING TO YOUR MOM OR BABY, MOMS KNOW  
THIS MAY NOT BE POSSIBLE AND ARE GRATEFUL FOR  
ANYTHING YOU GIVE.**

**I KNOW SOMEONE WHO THIS PROGRAM COULD BE  
REALLY HELPFUL FOR. HOW DO I HELP THEM?  
WE WORK DIRECTLY WITH PREGNANCY CENTERS ON  
THIS PROJECT, THE BEST WAY TO SEE IF YOUR FRIEND  
QUALIFIES IS FOR HER TO BECOME A CLIENT AT HER  
LOCAL PREGNANCY CENTER! VISIT [FINDHELPLA.COM](http://FINDHELPLA.COM) TO  
FIND A PREGNANCY CENTER NEAR YOU!**

**HAVE A QUESTION THAT WASN'T ANSWERED HERE?  
EMAIL [ASHLEN@PROLIFELOUISIANA.ORG](mailto:ASHLEN@PROLIFELOUISIANA.ORG)**



**LEARN MORE AT [WWW.PROLIFELOUISIANA.ORG/LOVETHEMBOOTHGARDEN](http://WWW.PROLIFELOUISIANA.ORG/LOVETHEMBOOTHGARDEN)**





**ADOPT A MOM THIS  
MOTHER'S DAY!**

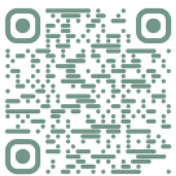
# **HOW IT WORKS**

**EVERY MOM DESERVES TO EXPERIENCE THE JOY OF BEING CELEBRATED AND SUPPORTED ON MOTHER'S DAY!**

**STEP 1: CHOOSE A FLOWER, EACH HAS A TAG ATTACHED WITH A MOM OR HER BABY'S WISHLIST!**

**STEP 2: SHOP FOR YOUR ADOPTED MOM OR BABY!**

**STEP 3: RETURN YOUR WISHLIST ITEMS WITH THE TAG ATTACHED TO THIS SITE BY MAY 2ND!**



**LEARN MORE AT [WWW.LOVETHEMBOOTHGARDEN.COM](http://WWW.LOVETHEMBOOTHGARDEN.COM)**





**Adopt a Mom or Baby in Need this Mother's Day by Picking a Flower From The Love Them Both Garden In The Lobby!**

**From Saturday, April 18th until Sunday May 2nd, our church will be hosting a Love Them Both Garden, a pro-life initiative helping moms and babies this Mother's Day!**

**Similar to the Christmas "Angel Tree," the Love Them Both Garden supports moms who are pregnant or parenting and facing difficult circumstances. This Mother's Day, you can adopt a mom or baby from the Love Them Both Garden in the lobby and shop for her needs. Consider doing this with your children as a special Mother's Day activity, or in honor or memory of your own mother!**

**Lets Love Both, Mom and Baby this Mother's Day!  
Learn more by visiting [www.ProLifeLouisiana.org/LoveThemBothGarden](http://www.ProLifeLouisiana.org/LoveThemBothGarden)**

